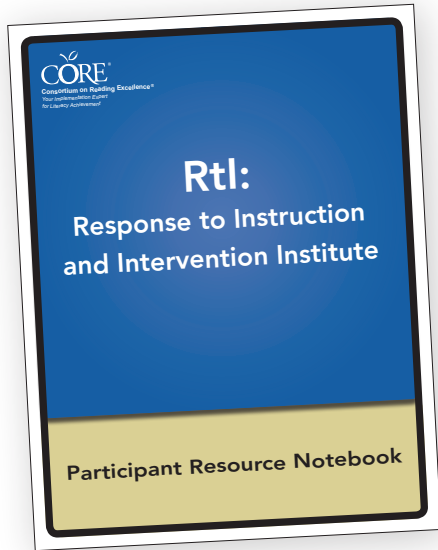


New!

Rtl: Response to Instruction and Intervention Institute



What are the benefits of implementing an Rtl system? How can we ensure that struggling students get timely, appropriate intervention?

Purpose:

This CORE institute is designed to lay the foundation for the implementation of a Response to Intervention or Response to Instruction (Rtl) system for K-12. Based on years of scientific data and informed by the research of Dr. Mark Shinn, schools and districts will learn how to design a three-tiered model with appropriate prevention and intervention materials, assessments, and processes to ensure regular education and special education services meet the needs of students. Following this institute, CORE offers expert technical assistance on-site to design and implement your own Rtl system. Look for our national events or bring this institute to your district.

Participant outcomes:

- Learn the elements of the three-tiered model
- Understand what types of assessments are necessary to make the Rtl model work
- Determine core, supplemental, and intervention materials
- Learn guidelines for establishing a problem-solving approach and setting up teams
- Develop a set of “next steps” to use following the institute

Target audience: K-12 literacy educators

Format: Three-day institute